

# T8 SERIES

COMMERCIAL INDOOR LIGHTING

**WESTGATE**  
THE FUTURE IS HERE...AND IT'S QUITE BRIGHT!

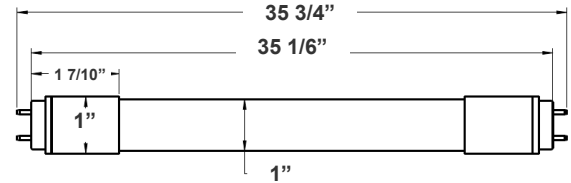
T8-EZ6-GS-3FT-12W-40K-C  
T8-EZ6-GS-3FT-12W-50K-C

Customer Name: \_\_\_\_\_

Project Name: \_\_\_\_\_

Note: \_\_\_\_\_

Type: \_\_\_\_\_



35 3/4"(L) X 1" (D)

Crystal Glass T8 Tube switches from fluorescent tubes to LED, giving more cost efficiency by providing the same amount of lumen output with less energy consumption. Type B single end and Type A+B are designed for different retrofit projects. 350° beam angle glass The LED tube offers a soft and bright light distribution. Stable quality out of mass automated production.

## Features

- Type A + B (Dual UL)
- Type A: With Existing Ballast - UL No. E366061
- Type B: Ballast Override (AC Direct), Connect One End or Both Ends (Dual Function) - UL No. E342884
- 5-Year Warranty
- Glass Lens

## Technical Specifications

### Electrical:

- Voltage: 120-277V; 50/60Hz AC
- Power Factor: >0.95
- THD: <20%
- Wattage: 12W
- Efficacy: 133 LPW

### Lighting:

- Dimming: Non Dimmable
- Total Lumens: 1600LM
- Color Temperatures: 4000K/5000K
- Color Rendering Index: CRI ≥ 83
- Beam Angle: 320°
- Rated life: 50,000 hrs

### Mechanical:

- Base Type: G13
- Glass tube: Better Transparency and Thermal Conductivity than Plastic
- Clear Glass
- Ambient Operating Temperature: -13°F to 113°F
- IP Rating: IP20 (Indoor)

### Applications:

- Direct Fit 4 T8 LED tubes do not burn out easily and provide bright and even lighting to schools, office spaces, retail stores and storage rooms.

### Other Models:

- 10W | 1200LM | T8-EZ6-GS-2FT-10W-30K-C
- 10W | 1200LM | T8-EZ6-GS-2FT-10W-35K-C
- 10W | 1200LM | T8-EZ6-GS-2FT-10W-40K-C
- 10W | 1200LM | T8-EZ6-GS-2FT-10W-50K-C
- 15W | 1800LM | T8-EZ6-GS-4FT-15W-30K-C
- 15W | 1800LM | T8-EZ6-GS-4FT-15W-35K-C
- 15W | 1800LM | T8-EZ6-GS-4FT-15W-40K-C
- 15W | 1800LM | T8-EZ6-GS-4FT-15W-50K-C
- 18W | 2160LM | T8-EZ6-GS-4FT-18W-30K-C
- 18W | 2160LM | T8-EZ6-GS-4FT-18W-35K-C
- 18W | 2160LM | T8-EZ6-GS-4FT-18W-40K-C
- 18W | 2160LM | T8-EZ6-GS-4FT-18W-50K-C

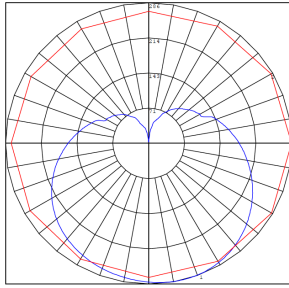
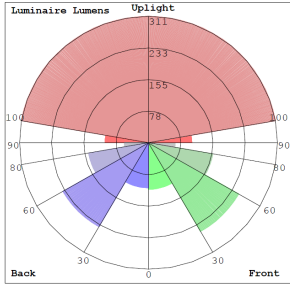


Phone: (877) 805-2252 | Fax: (877) 805-2252  
www.westgatemfg.com | www.westgatecontrols.co

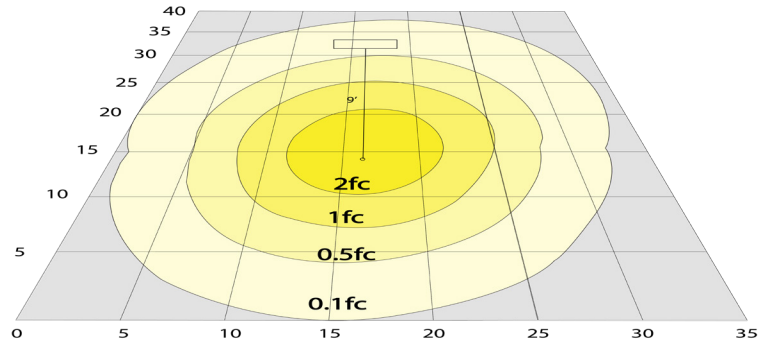


WG-Z8-2D-2Z

## Photometrics: T8-EZ6-GS-3FT-12W



BUG Rating: B1-U3-G1



Simulation based on 5000K, Area 40'x 35' Mounting Height: 9'

## Other Views:



Close-up View



Front View



Socket View

## Performance Table: T8-EZ6-GS-3FT-12W

MODEL NO.	Wattage	Voltage	Lumens	Color Temp.	BUG Rating	LPW
T8-EZ6-GS-3FT-12W-40K-C	12W	120-277V	1600LM	4000K	B1-U3-G1	133
T8-EZ6-GS-3FT-12W-50K-C	12W	120-277V	1600LM	5000K	B1-U3-G1	133

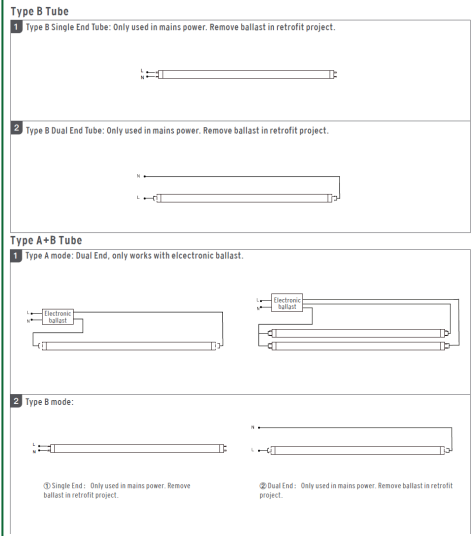
## Sample Ordering

**Model**      **Material**      **Size**      **Watt**      **Color Temp.**      **Lens Type**  
 T8   -   EZ6   -   GS   -   3FT   -   12W   -      -   C  
 40K = 4000K  
 50K = 5000K

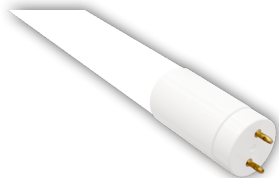
## Example:

1. T8-EZ6-GS-3FT-12W-40K-C (FOR 12W 4000K T8 3FT TUBE LAMP 120-277V)

## WIRING DIAGRAM:



## Other Models: T8-EZ6-GS-3FT-12W-F (Frosted Lens)



Close-up View



Front View



Socket View